

# ASHRAE Rochester



Joe Pompili Photography

VOLUME 13, ISSUE 4

DECEMBER, 2018

## INSIDE THIS ISSUE:

Officer / Committee List	2
Events Calendar	3
President Msg	4
Monthly Meeting Info	5
Highlights from November	6
Job Postings	7
PAOE Points	9
Women In ASHRAE	9
Membership Application	10
Student Membership Application	11
BOG Meeting Minutes	14
Winter Conference in	18

## December ASHRAE Meeting



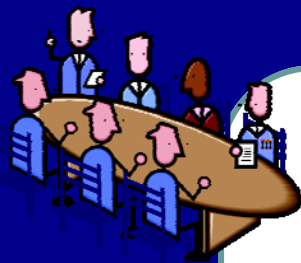
**Topic:** Sustainability and Resilience—Examples of Community and Campus Energy Assessments  
**Presenter:** Chonghui Liu (CL), Popli Design  
**When:** Monday, December 10th, 2018 at 12pm  
**Where:** City Grill, 384 East Avenue in Rochester  
**Cost:** \$25.00

Please RSVP by noon Friday, December 7th to Bret Fryover

fryoverb@erdmananthony.com  
Or  
ASHRAERochester@gmail.com

PDH Approved!

Statements made in this publication are not expressions of the Society or of the chapter and may not be reproduced without special permission of the chapter.



## Chapter Officers

### President

Paul Kenna, PE  
(585) 261-0558  
Paul.kenna@pres-services.com

### President Elect

Tom Streber  
(585) 272-9450  
tstreber@jwswanson.com

### Treasurer

Mike Benedict  
(585) 490-2661  
mike@airsystemsbalancing.com

### Secretary

Scott Edwards  
(585) 301-6591  
scott.g.edwards@jci.com

## Committee Chairs

### CTTC

Jeff Wiedrick (585) 498-7919  
jwiedrick@bergmannpc.com

### Grassroots Government Advocacy

Marjani Wilson (585) 402-7069  
mwilson@labellapc.com

### Refrigeration Co-Chairs

Michael Nohle (585) 545-5522  
mnohle@meiersupply.com  
Sam Scorsone, PE (585) 429-3925 ext 3925  
Samuel.Scorsone@wegmans.com

### Historian

Jake Hall (585) 869-5125  
jhall@proairplus.com

### Membership

George Herman (585) 219-5908  
george@hermanhvac.com

### YEA

Matt Kremers (585) 398-8018  
mkremers@mcsmms.com

### Student Activities

Rob Hudson, PE (585) 341-3187  
rhudson@ibceng.com

## Board of Governors

George Herman (3)  
(585) 219-5908  
George@hermanhvac.com

Marjani Wilson (2)  
(585) 402-7069  
mwilson@labellapc.com

Jeff Wiedrick (2)  
(585) 498-7919  
jwiedrick@bergmannpc.com

Matt Kremers (2)  
(585) 398-8018  
mkremers@mcsmm.com

Bret Fryover (1)  
(585) 427-8888  
fryoverb@erdmananthony.com

Chris Bove (1)  
(585) 202-1222  
(586)chrisb@rl-stone.com

### Education

Bill Murray (585) 641-7121  
bmurray@ec4b.com

### Newsletter Editor

Scott Edwards (585) 301-6591  
ashraerocnews@gmail.com

### Attendance

Bret Fryover (585) 427-8888  
fryoverb@erdmananthony.com

### Publicity

Mark Kukla (585) 232-3440  
mark@airsystemsbalancing.com

### Research Promotion Co-Chairs

Matt Devlin  
matthew.devlin@xerox.com  
Zac Hess (585) 232-5137  
zhess@bergmannpc.com

### Webmaster

Steve Dear (585) 325-1290  
sdear@crosbybrownlie.com

### Nominating / Past President

Bill Clark (585) 303-0729  
william.clark@dayautomation.com

### Buyer's Guide

Pete Bukowski (585) 398-8018  
pbukowski@mcsmms.com

# SAVE THE DATE

We are still working on programs for the year, but save the date!

ASHRAE 2018-2019 Meeting Schedule			
Date	Event	Theme	Location
Monday, 12/10/2018	Sustainability & Resilience-Examples of Community and Campus Energy Assessments <i>Presented By:</i> Chonghui Liu	Refrigeration Night Resource Promotion <i>PDH Pending</i>	City Grill @ 12:00 PM
Monday, 1/14/2019	----- <i>Presented By:</i>	<i>PDH Pending</i>	City Grill @ 12:00 PM
Friday, 2/8	62st Annual ASHRAE Valentines Dinner Dance	---	TBD
Monday, 2/11/2019	----- <i>Presented By:</i>	<i>Membership Promotion</i> <i>PDH Pending</i>	City Grill @ 12:00 PM
Monday, 3/11/2019	Overview of Risk Management for Infection Control During Health Care Construction <i>Presented By:</i> Marlene Linders	<i>Resource Promotion</i> <i>PDH Pending</i>	City Grill @ 12:00 PM
Monday, 4/8/2019	<i>Refrigeration night - presentation and tour TBD</i>	<i>Refrigeration Night</i> <i>PDH Pending</i>	TBD
Monday, 5/20/2019 <small>(subject to change)</small>	<i>Annual Picnic / Golf Outing at Ravenwood</i>	---	11:00 AM Golf 5:30-8:00 Picnic

## Mission Statement

ASHRAE will advance the arts and sciences of heating, ventilation, air conditioning, refrigeration and related human factors to serve the evolving needs of the public and ASHRAE members.



Shaping Tomorrow's  
Built Environment Today

## Vision Statement

- will be the global leader in the arts and sciences of heating, ventilation, air conditioning and refrigeration.
- will be the foremost, authoritative, timely and responsive source of technical and educational information, standards and guidelines.
- will be the primary provider of opportunity for professional growth, recognizing and adapting to changing demographics, and embracing diversity.

# President's December Message

December Newsletter 2018  
President's Message

Our meeting in November was on "HVAC Air Filters and Filter Energy" presented by The Camfil Group and RP Fedder. We appreciate and Charlie Seyffer and Roger Zaccour taking time to share their expertise with our chapter. Thank you as well to everyone that attended.

Our December meeting will be Resource Promotion night, where we would like to thank our 2017/18 donors. We are very thankful to all who donate to ASHRAE Resource Promotion, helping to fund ASHRAE Scholarships and multiple research projects across the country that help drive the content in the handbooks we all rely on. If you are not currently a donor, but would like to be, please contact our committee chairperson, Zac Hess, for details on how you can help support ASHRAE Resource Promotion at [zhess@bergmannpc.com](mailto:zhess@bergmannpc.com)



*Paul Kenna, 2018-2019 President*

Our presentation for December will be 'Sustainability & Resilience - Examples of Community and Campus Energy Assessments', presented by Chonghui Liu. Please consider joining us for lunch on December 10<sup>th</sup> at City Grill.

Please continue to check out our website at [www.rochester.ashraechapters.org](http://www.rochester.ashraechapters.org) for information on upcoming chapter meetings, current officer list and contact information, chapter newsletters, and more! Also take a minute and like us on Facebook at [www.facebook.com/#!/ashraerochester](https://www.facebook.com/#!/ashraerochester).

Paul Kenna, P.E.  
2018-2019 President  
Rochester Chapter

# December Meeting Info

Please mark your calendar and join us for the next ASHRAE meeting on **Monday, December 10<sup>th</sup>**!

Date: Monday, December 10, 2018  
 Time: 12:00 PM Lunch Buffet... Presentation to start approx. 12:30pm  
 Speakers: Chonghui Liu (CL), Popli Design Group  
 Topic: Sustainability and Resilience  
 Examples of Community and Campus Energy Assessments  
 Location: [CITY GRILL](#) [384 East Ave, Rochester NY 14607](#)  
 Cost: \$25.00

As always, feel free to share this e-mail invitation with anyone you may think would be interested in attending or benefit from this presentation. Your ASHRAE Rochester Chapter appreciates your support and looks forward to your participation each month!

You can **PREPAY** for the event! Remember, as an option, we have on-line payments available via PayPal - No PayPal account required.

Use the following link: <http://rochester.ashraechapters.org/meetings.html>

If you are registering more than only yourself, please send me a quick email with name of the attendees so we can update our guest list.

Cash or check payment is still accepted at the door **with your advanced reservation**. Checks can be made payable to **ASHRAE Rochester Chapter**. Please let me know if you're planning to be there!

**Please RSVP by noon Friday, December 7<sup>th</sup>** to Bret Fryover, e-Mail... [fryoverb@erdmananthony.com](mailto:fryoverb@erdmananthony.com), or Phone: 585.563.5152

\*\*\*\*\*

**Attention Members:**

Just a reminder that all members that reserve a spot for the monthly meeting will be responsible for that reserved space.

**Members have until 12:00 pm the day of the RSVP deadline to cancel their meeting reservation.**

Failure to comply with this rule will result in the attendee being responsible for the payment of that reservation.

ASHRAE Rochester Chapter Officers

# Highlights from November ASHRAE Meeting



*Charlie Seyffer (left), from Camfil Clean Air Solutions, led a talk on performance considerations for air filters on Monday, November 12th at the City Grill. Roger Zaccour (below) from R.P. Fedder goes through an example of cost savings per filter by lowering the static pressure over a one year period.*



*Prior to the presentation, Al Rodgers presented various Chapter Awards from the CRC that was held in Jersey City in August.*



*Clockwise from left: Paul Kenna (left) receives the Membership Certificates from Al Rodgers (right). Al presents to Bill Clark the Presidential Award and Past President's Award.*





This section of the newsletter is reserved for those firms wishing to advertise their desires to hire from the Chapters Membership. If you are interested in utilizing this FREE service provided by the Rochester Chapter, please contact our Chapter President, Paul Kenna at (585) 261-0558 or by email [paul.kenna@pres-services.com](mailto:paul.kenna@pres-services.com).

This service is available to ASHRAE members for any local firm in our industry looking for knowledgeable persons in the HVAC&R industry.

## **RL STONE**

an FCX Performance Company



### **Help Wanted – Inside Sales Representative**

### **Regular Full-Time**

#### Required Knowledge

- *Accounting Standards, Customer Service, Product knowledge, etc.)* Responds to customer inquiries.
- Process customer orders and send order acknowledgements.
- Review customer purchase orders for special conditions/documentation.
- Check availability and verifies ship dates.
- Process and expedite orders, customer returns and returns to vendors in an accurate and timely manner.
- Negotiate pricing and delivery with vendors when necessary.
- Communicate effectively and participate positively as a member of the Branch/Division (e.g. sharing work load when possible, picking incoming phone calls, etc.)
- Achieve and maintain rapport with customers and works to give them the best possible service. This is done through a combination of problem solving skills, attention to detail, and developing a friendly but professional relationship with customers.
- Resolve customer issues such as warranty claims, product returns, credit and collection, and other customer service issues.
- Review open customer order reports and takes action on open items; specifically, those items that may be at risk in meeting the customer's promised delivery date. Maintain Distribution System backorder report, associated customer expediting report/notices, and customer notification, as required.

**RL STONE**

an FCX Performance Company



## Help Wanted – Inside Sales Representative

### Required Knowledge (continued)

- Assumes responsibility for project submittals and documentation including coordination between vendors and project contractors.
- Assures project contract documentation requirements are maintained and communicated to Management.
- Other duties as assigned by Management
- Maintain the filing and organization of company documents.

### Essential Physical Functions/Equipment Used:

- Able to operate standard office equipment, namely computer, multi-line VoIP phone system, printer/copier/scanner and other equipment as needed.
- Must be able to sit for long periods of time while viewing computer screen.

### Essential Functions:

Self-motivated with a can-do attitude that identifies smart, creative methods to complete complex tasks with minimal effort.

- Aggressive in sales tactics and strategies; desire to close sales every phone call.
- Excellent internal & external communication and problem solving skills.
- Strong organizational and task management skills.
- Able to tackle multiple projects while being organized, detail, and deadline oriented.
- Ability to relate to all levels of employees within the organization, as well as people customers & vendors.
- Ability to focus on company expectations while continuously striving for continuous improvement.

### Preferred Education/Experience:

- Bachelor's Degree **preferred**.
- 1-3+ years' experience in Customer Service related Industry preferred, experience in an Inside Technical Sales/Customer Service/Application Engineer role with an Industrial Distributor a plus.

### Work Environment:

- Modern, multi-function office environment.
- Normal working hours are 8:00am to 5:00pm, Monday through Friday; Additional hours as needed.

### Please Contact:

Josh Murray – RL Stone Co.

585-203-1222

joshm@rl-stone.com



# PAOE

Chapter: ROCHESTER (011)  
Chartered: 11/30/1955



Members  
(CIQ)



Chapter  
Reports



Chapter  
Meetings



PAOE



Chapter  
Settings



Reports



Export

ROCHESTER

2018-2019

Expanded

Achievements

▶ Chapter Operations	Par: 1200	Min Points: 600	<b>Total Points: 390</b>
▶ Chapter Technology Transfer	Par: 1050	Min Points: 550	<b>Total Points: 0</b>
▶ Electronic Communications	Par: 600	Min Points: 250	<b>Total Points: 50</b>
▶ Government Affairs	Par: 650	Min Points: 500	<b>Total Points: 0</b>
▶ Historical	Par: 300	Min Points: 100	<b>Total Points: 155</b>
▶ Membership Promotion	Par: 800	Min Points: 500	<b>Total Points: 375</b>
▶ RP	Par: 1050	Min Points: 800	<b>Total Points: 335</b>
▶ Student Activities	Par: 500	Min Points: 300	<b>Total Points: 0</b>

## Like us on Facebook!

Visit our new Facebook page by searching for “ASHRAE Rochester” on Facebook. Any ideas for ad-ditions or improvements email to Mark Kukla at [mark@airsystemsbalancing.com](mailto:mark@airsystemsbalancing.com). Keep up to date with current events and photos from recent meetings.

## Committee Updates



WIA – Rochester Chapter Women in ASHRAE

Upcoming Networking Events

- **WiA meeting with Marlene Linders @ CityGrill**

Monday, March 11<sup>th</sup> from 11:00AM-12 Noon

Women-in-ASHRAE will be sponsoring a Female DL speaker at the March 2019 ASHRAE-Rochester chapter meeting this year. Marlene Linders will be traveling from Florida to visit our chapter to present on “Overview of Risk Management for Infection Control during Healthcare Construction”. We have requested an extra hour with Marlene before the lunch meeting to discuss Marlene’s career path and her insights as a leading Woman-in-ASHRAE. All members of ASHRAE are invited to attend.

For questions or suggestions regarding future WIA events or books, please contact Jaimee Wilson:

[jwilson@pathfinder-ea.com](mailto:jwilson@pathfinder-ea.com)



# ASHRAE Membership Application

Save Time. Join Online at [www.ashrae.org/join](http://www.ashrae.org/join)

Shaping Tomorrow's  
Built Environment Today

Prices shown are valid from July 1, 2017 through June 30, 2018

## MEMBERSHIP

### WHO ARE ASHRAE MEMBERS?

Members are represented by consulting engineers, mechanical contractors, building owners, employees of manufacturing companies, educational institutions, research organizations, government, architects, students or anyone concerned with HVAC&R for the built environment.

### WHICH MEMBER TYPE IS RIGHT FOR YOU?

ASHRAE has three grades of membership awarded to applicants based on their experience and participation in the industry. Before you apply and select a member grade, we encourage you to visit the ASHRAE website to see the member grades and their corresponding member benefits. Prices shown are in US currency.

#### Member (\$206)

Available to anyone with 12 years or more ASHRAE approved experience in the HVAC&R industry.

#### Associate Member (\$206)

Available to anyone with less than 12 years of ASHRAE approved experience in the HVAC&R industry.

#### Affiliate Member

(\$52 first year, \$78 second, \$103 third)

Affiliate grade is for individuals who are new to ASHRAE (no previous membership in ASHRAE) and are age 30 or younger. It provides a great beginning for young professionals who wish to become involved in ASHRAE. (Does not include the annual member benefit of the ASHRAE Handbook).

Privacy Policy: By supplying your email address you are agreeing to receive electronic communications from ASHRAE, with the knowledge that you may opt-out of certain electronic communication once you become a member. Please visit [ashrae.org/privacypolicy](http://ashrae.org/privacypolicy) for additional information.

## MEMBER BENEFITS AND RESOURCES

### PUBLICATIONS & RESOURCES

- ASHRAE Handbook (Available to Members and Associates) in print or PDF, as well as a 12 month complimentary subscription to the Handbook Online, which provides online access to the most recent 4 volumes of the Handbook series.
- Monthly ASHRAE Journal in print and online
- Quarterly High Performing Buildings magazine in print and online
- e-Industry and eSociety electronic newsletters
- Access to members-only resources through ASHRAE.org, including the ASHRAE Journal and ASHRAE Research archives
- Discounts on over 300 of the industry's leading technical publications

### PROFESSIONAL EDUCATION AND CAREER DEVELOPMENT

- Discounted registration for education courses through the ASHRAE Learning Institute, as well as ASHRAE certification programs
- Earn PDHs/CEUs/AIA LUs to maintain your professional designation/license with courses, seminars, and webcasts
- Gain industry knowledge, communication, and management skills by participating in ASHRAE technical programs or committees
- Post jobs or seek employment utilizing [www.ASHRAEjobs.com](http://www.ASHRAEjobs.com)

### NETWORKING

- Connect locally, regionally and internationally with over 57,000 members in over 180 chapters worldwide
- Learn, share, and grow at the Annual and Winter Conferences, on ASHRAE technical committees, and [ASHRAExChange.org](http://ASHRAExChange.org)
- Participate in your local chapter or regional meetings and events

Code of ethics: By submitting this application you are agreeing to abide by the ASHRAE Code of Ethics, found at [ashrae.org/codeofethics](http://ashrae.org/codeofethics).

Completed applications or questions can be sent to ASHRAE via  
email: [membership@ashrae.org](mailto:membership@ashrae.org) | fax: 678-539-2129 | phone: 1-800-527-4723 or 404-636-8400  
mail: 1791 Tullie Circle, NE, Atlanta, GA 30329

1. Contact Information.  Mr.  Miss  Ms.  Mrs.  Dr. \*Birthday (required) \_\_\_\_\_ / \_\_\_\_\_ / \_\_\_\_\_  
 (Month) (Day) (Year)

Name \_\_\_\_\_  
 (First) (Middle) (Last) (Designation)

Primary Address This is a  Home  Business Alternate Address This is a  Home  Business

Company Name \_\_\_\_\_ Company Name \_\_\_\_\_

Address \_\_\_\_\_ Address \_\_\_\_\_

City \_\_\_\_\_ State/Province \_\_\_\_\_ City \_\_\_\_\_ State/Province \_\_\_\_\_

Zip/Postal \_\_\_\_\_ Country \_\_\_\_\_ Zip/Postal \_\_\_\_\_ Country \_\_\_\_\_

E-mail \_\_\_\_\_ Alternate E-Mail \_\_\_\_\_

Telephone \_\_\_\_\_ Cell \_\_\_\_\_ Preferred Chapter  Home  Business  Other \_\_\_\_\_

Name/Chapter of referring member (if applicable): \_\_\_\_\_

2. Member Grade.  
 For additional information on member grades and benefits see reverse or visit ashrae.org.

Member — \$206 (must complete section 2a)

Associate Member — \$206

Affiliate Member — \$52 first year/\$78 second/\$103 third (new members, under 30)

Reinstate my previous membership. Previous member number: \_\_\_\_\_

2a. Biographical Information. ONLY Member Grade applicants must complete this section. Use additional sheets or attach resume if necessary. Associate and Affiliate grade applicants do not complete this section.

School	Location	Dates of Attendance	Degree/Course of Study
Educational Record			
Employer	Location	Dates of Employment	Position/Title
Qualifying Work Experience			

Professional Engineering Registration Information License Number \_\_\_\_\_ Date Issued \_\_\_\_\_ Field of Registration \_\_\_\_\_ Location of Registration \_\_\_\_\_

3. Demographics. Please answer the questions by entering the codes in the space provided.

Which best describes your title? \_\_\_\_\_

B- President	S- Purchasing Agent
C- Partner	T- Draftsperson
D- Associate	U- Estimator
E- Owner	W- Technician
F- Vice President	X- Instructor
G- VP Eng. Chief Engineer	Professor
K- Design Eng./Designer	Y- Student
L- Proj./Application Eng.	Z- Librarian
O- Facility Eng./Mngr.	ZZ- Other
P- R&D Eng.	
R- Sales Engineer	

Which best describes your firm? \_\_\_\_\_

11- Consulting Eng.	51- Manufacturer
12- Architectural & Eng	61- Manufacturer's Rep.
15- Design/Build	62- Sales Engineering
21- Contractor	71- Wholesaler/Dist.
26- Property Mgmt & Dev.	83- Library
31- Industrial Facility	84- Tech/Prof Assoc.
41- Commercial Facility	85- Trade Assoc.
42- Gov't, Health, Education	86- Student
43- Utility	91- Other/Misc.

Which best describes your function? \_\_\_\_\_

1- Design/Application	5- Sales
2- Manufacturing	6- Research
3- Maintenance Operations	7- Teaching
4- Management	8- Other

4. Areas of HVAC&R Interest. Enter the code for your area of interest from the list below:  
 Code: \_\_\_\_\_

Heating	Refrigeration
A- Hydronic	S- Unitary Refrigeration
B- Forced Air	T- Commercial Refg.
C- Steam	U- Industrial Refg.
D- Process	V- Process Refg.
E- Service Water	W- Low Temp (<60F)
F- Solar	X- Refg. Components
G- Radiant	
	General Areas
Ventilating & AC	1- Controls/Instrumentation
H- Air Cleaning	2- Heat Transfer Fluid Flow
J- Industrial	3- Pipes, valves, fittings
K- Clean/Computer Room	4- Refg. & Lubrications
L- AC Equip. <20 tons	5- Sound & Vibration
M- AC Equip. 20-200 tons	6- Insulation
N- AC Equip. > 200 tons	7- Energy Recovery
P- Air Handling Systems	8- Food Application
Q- Evaporative Coolers	9- Health, Safety
R- IEQ	10- Commissioning

5. Handbook Preference. New Members and Associate Members receive a 12 month complimentary subscription to the Handbook Online, which includes access to the most recent 4 volumes of the Handbook. If you would like a print copy of the ASHRAE Handbook in addition to this subscription, please chose either IP or SI version below. Handbooks are printed and mailed to members annually in June.

I-P (inch/pound units), print with PDF

SI (metric units), print with PDF

PDF only (I-P & SI)

6. Privacy Notice If you DO NOT wish to receive 3rd party physical mailings, please check here.

7. Include chapter membership dues:  Dues Amount: \_\_\_\_\_ Paying chapter dues is encouraged but not mandatory, and can be paid separately to the Chapter at anytime. Contact chapter officers for amount. Add this amount to your Society dues in the 'Total Amount' of the payment section below.

8. Payment.  Visa  Mastercard  Amex  Diner's Club  Check/money order\*\*

Card # \_\_\_\_\_ Expiration Date \_\_\_\_\_ / \_\_\_\_\_  
 (Month) (Year)

Total Amount: \_\_\_\_\_ Signature \_\_\_\_\_

CHECKS WILL BE ACCEPTED IN US AND CANADIAN FUNDS. CREDIT CARD PAYMENTS ACCEPTED IN US FUNDS ONLY

# Application for Student Membership



Join online at [www.ashrae.org/students](http://www.ashrae.org/students)

At the student branch level, you'll enjoy meeting other students with similar interests – if your school hasn't yet started a student branch, take charge and contact a faculty member and ask for help on getting started!

## Why ASHRAE?

- Discounts on publications, conferences, and continuing education opportunities
- Society and chapter-level scholarships for both undergraduate and graduate engineering students
- Discounts for student members on select publications
- Digital access to the monthly ASHRAE Journal and the quarterly High Performing Building Magazine
- Participate in events with your local ASHRAE Chapter
- Find internships and jobs at [jobs.ashrae.org](http://jobs.ashrae.org)
- Senior Undergraduate Project Grant Program
- Discounted ASHRAE Annual and Winter Conference registration (AHR Expo, Student Program, Technical Sessions)
- Gain essential skills not taught in class
- Make great new friends!

## Developing Economies Program for Students

Students who reside in countries categorized as "Low Income" and "Lower Middle Income" developing economies by the World Bank List of Economies statistics are eligible to participate in this program. Students in this program receive all the benefits of regular student membership, including online access to the ASHRAE Journal (digital access only - participants will not receive a monthly printed copy of the ASHRAE Journal).

Visit [www.worldbank.org](http://www.worldbank.org) for a listing of qualified countries: Low Income and Low Middle Income only. If you currently reside in one of the countries listed in those categories, simply check the box marked 'Developing Economies Program' in the 'Purchases' section of this application.

**1. Contact Information.**  Mr.  Miss  Ms.  Mrs. \*Birthday (required) \_\_\_\_\_ / \_\_\_\_\_ / \_\_\_\_\_  
 (Month) (Day) (Year)

Name \_\_\_\_\_  
 (First) (Last)

Primary Address (where all correspondence will be mailed) Alternate Address  
 Address \_\_\_\_\_ Address \_\_\_\_\_  
 \_\_\_\_\_

City \_\_\_\_\_ State/Province \_\_\_\_\_ City \_\_\_\_\_ State/Province \_\_\_\_\_  
 Zip/Postal \_\_\_\_\_ Country \_\_\_\_\_ Zip/Postal \_\_\_\_\_ Country \_\_\_\_\_

E-mail \_\_\_\_\_ E-mail \_\_\_\_\_

Phone: \_\_\_\_\_ Phone: \_\_\_\_\_

I would like to receive occasional student updates via email. | I would like to participate in the \_\_\_\_\_ ASHRAE Chapter.

**2. Student Branch Information.** School Name: \_\_\_\_\_

Address: \_\_\_\_\_

City: \_\_\_\_\_ State/Province: \_\_\_\_\_ Postal Code \_\_\_\_\_

**3. Education.** Classification: Freshman  Sophomore  Junior  Senior  Masters/PhD.

Full time  Part time  Degree: \_\_\_\_\_ Expected Graduation Date: \_\_\_\_\_  
 (MM/DD/YYYY)

**4. Sponsor Information.**

All student applicants must have the name and member number of an ASHRAE member serving as their student sponsor. If your Student Branch Advisor is an active Associate or Member of ASHRAE, he/she can serve as your sponsor. If you need assistance locating a sponsor, please email [students@ashrae.org](mailto:students@ashrae.org) or call 678-539-1212. Also, you must list the name, phone and email address of your faculty advisor or course instructor.

Sponsor Name: \_\_\_\_\_ ASHRAE Member #: \_\_\_\_\_

Advisor/Instructor: \_\_\_\_\_ Email \_\_\_\_\_

**5. Purchases.**

Student Membership- Regular: \$21  Student Membership- Developing Economies Program (see reverse for qualifications) \$11

Printed Edition of the current ASHRAE Handbook:  I-P  SI Student Member Price: \$49.00

PDF Version of the ASHRAE Handbook (Includes both I-P and SI Units) Student Member Price: \$39.00

ASHRAE Handbook Online - One Year Subscription to all four volumes of the Handbook series: \$33.00

\*Additional publications are available at student member discounts at [ashrae.org/studentbookstore](http://ashrae.org/studentbookstore)

**6. Payment.**  Visa  Mastercard  Amex  Diner's Club  Check/money order\*\*

Card # \_\_\_\_\_ Expiration Date \_\_\_\_\_ / \_\_\_\_\_  
 (Month) (Year)

Total Amount: \_\_\_\_\_ Signature \_\_\_\_\_

CHECKS WILL BE ACCEPTED IN US AND CANADIAN FUNDS. CREDIT CARD PAYMENTS ACCEPTED IN US FUNDS ONLY



Rochester Chapter - ASHRAE

Board of Governors Meeting

November 9th, 2018 7:30 AM - 8:30 PM

PRES Energy, One Grove Street, Pittsford, NY

Meeting Minutes

X	Paul Kenna	President / CRC Alternate
X	Tom Streber	President Elect / Program
X	Mike Benedict	Treasurer
	Scott Edwards	Secretary & Newsletter Editor
X	Bill Clark	Immediate Past President & Nominating / CRC Delegate
X	George Herman	Board of Gov. (3) & Membership Promotion Chair (MP)
X	Marjani Wilson	Board of Gov. (2) & Grassroots Government Advocacy Co-Chair
	Jeff Wiedrick	Board of Gov. (2) & Chapter Technology Transfer Chair (CTTC)
	Matt Kremers	Board of Gov. (2) & Young Engineers in ASHRAE Chair (YEA)
X	Bret Fryover	Board of Gov. (1) & Attendance Co-Chair
X	Chris Bove	Board of Gov. (1)
X	Tim Duprey	Attendance Co-Chair
	Jake Hall	Historian Chair
X	Matt Devlin	Research Promotion Co-Chair (RP)
	Zachary Hess	Research Promotion Co-Chair (RP)
X	Rob Hudson	Student Activities Chair (SA)
	Al Rodgers	Awards & Recognition Chair
	Bill Murray	Education
	Mark Kukla	Publicity
	Jim Browe	Picnic/Golf Chair
	Pete Bukowski	Buyers Guide
	Jody McGarry	Valentine's Dinner Dance
	Mike Nohle	Refrigeration Co-Chair
	Sam Scorsone	Refrigeration Co-Chair
	Jaimee Wilson	Women in ASHRAE, Chair
	Michelle Sommerman	Women in ASHRAE

- |   |                             |
|---|-----------------------------|
| 1. Call to Order  | Paul Kenna                  |
| 2. Roll Call  | Tom Streber                 |
| 3. Review and Approval of Previous Meeting Minutes  | All                         |
| • Approved - Mike B., Bret F.   |                             |
| 4. Treasurer Report   |                             |
| • Financials from Oct Meeting and Overall   | Mike Benedict               |
| 5. President Elect/Program  | Tom Streber                 |
| • November Meeting is PDH approved  |                             |
| • Revised Schedule  |                             |
| 6. Attendance   | Brett Fryover<br>Tim Duprey |
| • October Reservation Summary (74 attendees)  |                             |
| • November - Current Reservation Numbers  |                             |
| • New mtg reservation payment system to be discussed with Bret, Tim D and Paul K.                           |                             |
| • Bret to investigate - Jeff Ellis' email to be removed from PayPal.  |                             |
| • Tim spoke with City Grill about the importance an expectation of having the buffet out and ready by 11:45 |                             |
| 7. CTTC Report  | Jeff Wiedrick               |
| • Pathfinder won 1 <sup>st</sup> place for the Tech Awards!   |                             |
| • New Project submission by April 1, 2019?  |                             |
| 8. Membership Report  | George Herman               |
| • Members   |                             |
| 1) 248 current  |                             |
| 2) 24 new   |                             |
| 3) 9 student  |                             |
| 4) 27 cancelled due to non-payment  |                             |
| 9. Student Activities Report  | Rob Hudson                  |
| • Trying to set up events with no responses from students.  |                             |
| • Going to reach out to MCC and RIT.  |                             |
| • Explorer post development in progress.  |                             |
| • Working with Eric Day on presentation at Gates Chili Middle Sch.  |                             |
| • Looking into to contact BOCES.  |                             |
| 10. Education Report  | Bill Murray                 |
| • No report   |                             |
| 11. YEA Report  | Matt Kremers                |
| • Trying to schedule a social event before the Holidays.  |                             |

- |   |                               |
|---|-------------------------------|
| <p>12. Awards &amp; Recognition Report</p> <ul style="list-style-type: none"> <li>• Awards from CRC to be presented at Nov Meeting</li> <li>• All members, not just officers and BOG members need to update their ASHRAE biographies and check the Chapter or Regional award criteria to see if they can be nominated for the award at the CRC. Their biography is on the ASHRAE website when they sign in. It can be updated easily right from that screen.</li> </ul> <p>If they are eligible, they should complete the form(s) and get them to you and me.....</p> | <p>Al Rodgers</p>             |
| <p>13. Resource Promotion Report</p> <ul style="list-style-type: none"> <li>• Current vs. Goal</li> <li>• Full Circle Contributions - Due November 15<sup>th</sup> at the latest <ul style="list-style-type: none"> <li>i. Check or credit card.</li> </ul> </li> <li>• Donor Recognition Boards for Dec. meeting.</li> <li>• Jody McGarry to contact Gray Metal for donation.</li> </ul>   | <p>Zac Hess / Matt Devlin</p> |
| <p>14. Refrigeration Report</p> <ul style="list-style-type: none"> <li>• No Report</li> </ul>   | <p>Mike Nohle / Sam S.</p>    |
| <p>15. Grassroots Government Advocacy Report</p> <ul style="list-style-type: none"> <li>• No new report</li> </ul>  | <p>Marjani Wilson</p>         |
| <p>16. Women in ASHRAE</p> <ul style="list-style-type: none"> <li>• No new report.</li> </ul>   | <p>Jaimee</p>                 |
| <p>17. Newsletter Report</p> <ul style="list-style-type: none"> <li>• RES deadline 11/15 - Reminder</li> </ul>  | <p>Scott Edwards</p>          |
| <p>18. Buyers Guide</p> <ul style="list-style-type: none"> <li>• No new report</li> </ul>   | <p>Pete Bukowski</p>          |
| <p>19. Historian Report</p> <ul style="list-style-type: none"> <li>• No new report</li> </ul>   | <p>Jake Hall</p>              |
| <p>20. Publicity Report</p> <ul style="list-style-type: none"> <li>• No new report</li> </ul>   | <p>Mark Kukla</p>             |
| <p>21. Website Report</p> <ul style="list-style-type: none"> <li>• Website needs updating (Chapter Officers, President's message).</li> </ul>   | <p>Steve Dear/Kevin Wind</p>  |
| <p>22. Nominating Report</p> <ul style="list-style-type: none"> <li>• No new report</li> </ul>  | <p>Bill Clark</p>             |
| <p>23. Valentines Dinner Dance Report</p> <ul style="list-style-type: none"> <li>• Schedule &amp; venue</li> <li>• Secured Hyatt Regency for the 2/8</li> <li>• Also penciled in the Stathallan</li> <li>• Is looking into Pane Vino</li> <li>• Any other suggestions?</li> </ul>   | <p>Jody McGarry</p>           |
| <p>24. Golf/Picnic Report</p> <ul style="list-style-type: none"> <li>• Confirmed 5/20 at Ravenwood.</li> </ul>  | <p>Jim Browe</p>              |



25. Presidential Award of Excellence (PAOE)

26. New Business:

- 2017-18 Taxes - will be filed this year

27. Old Business:

- 2018-19 Audit Committee and Date - TODAY
- Removal of Jeff Ellis from PayPal
- 2017-18 Audit - Paul K to send resolution for approval
- 2017-18 Taxes - will be filed this year - NEED Investment Account Balances

28. Set next BOG Meeting date / time / place.

- Monday, December 10th, 10:30-11:30 am, /City Grill

29. Adjourn - 8:15 am

## 2019 Winter Conference & AHR Expo

The [2019 ASHRAE Winter Conference & AHR Expo](#) taking place in Atlanta this January. The ASHRAE Winter Conference takes place Jan. 12-16 at the Omni Atlanta Hotel at CNN Center and the neighboring Georgia World Congress Center, where the AHR Expo is taking place Jan. 14-16. Together, the Winter Conference and AHR Expo provide you and your colleagues with ring-side seats to the latest technological developments, educational offerings, and networking opportunities.

The Conference Technical Program offers over 100 sessions within 8 tracks:

Track 1. Systems and Equipment

Track 2. HVAC&R Fundamentals and Applications

Track 3. Refrigeration

Track 4. Construction, Operation, and Maintenance of High Performance Systems

Track 5. Common System Issues and Misapplications.

Track 6. The Convergence of Comfort, Indoor Air Quality, and Energy Efficiency

Track 7. Building Integrated Renewables and Natural Systems

Track 8. The Engineer's Role in Architecture

The AHR Expo will host more than 2,000 exhibitors and 65,000 industry professionals. When you register for the ASHRAE Conference, your ASHRAE badge will give you access to the AHR Expo.

Additional conference activities include technical and general tours of Atlanta, social events like the Welcome Party and Members Night Out, and of course ASHRAE Learning Institute Courses, Certification exams, and more.





**2019 ASHRAE WINTER CONFERENCE**  
JANUARY 12–16 // **AHR EXPO** JANUARY 14–16



[ashrae.org/atlanta](http://ashrae.org/atlanta)



The 2019 ASHRAE Winter Conference & AHR Expo will take place in Atlanta this January, at the Omni CNN Center and the Georgia World Congress Center in downtown Atlanta. Expect thousands of industry professionals, hundreds of learning opportunities, and a very short walk to the AHR Expo.

### Technical Program

Available online in mid-September, the technical program is comprised of eight tracks, and offers 100+ technical sessions to choose from. The track focus areas include refrigeration, HVAC&R fundamentals and applications, systems and equipment, common system misapplications, and achieving high performance building operation after design. Others are aimed at moving building design, construction, and operation forward.

### Registration

Just \$450 for first-time attending members, and \$25 for students (early bird rates end October 28). Additional registration types and fees are listed at [ashrae.org/atlanta](http://ashrae.org/atlanta).

Social events, tours, and ALI courses can be added for additional fees during the registration process.

Registrant Type	Tech Program Sessions	Plenary Session	AHR Expo	Virtual Conference
Member/Non-member	✓	✓	✓	✓
First Time Attendee – Member/Non-member	✓	✓	✓	✓
One Day – Member/Non-member	day	✓	✓	✓
Speaker	✓	✓	✓	✓
Student	✓	✓	✓	
Student Branch Advisor	✓	✓	✓	
Spouse/Guest	✓	✓	✓	
Life Member	✓	✓	✓	✓

Learn More and Register at [ashrae.org/atlanta](http://ashrae.org/atlanta)

## Social Events

Small and intimate or larger than life, the ASHRAE Winter Conference offers a gathering for everyone, conveniently located at the Omni CNN Center (except where noted below). Events can be included with registration for an additional fee.

The Welcome Party –  
Fembank Museum

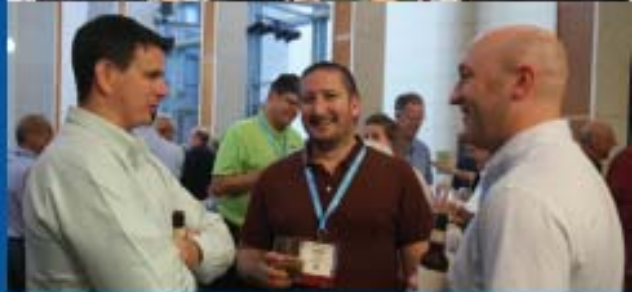
Young Engineers  
in ASHRAE (YEA)  
Hospitality Suite

Women in ASHRAE  
Breakfast

Life Members'  
Luncheon

President's Luncheon

Members' Night Out



## Tours

From the College Football Hall of Fame to highlights from the Hunger Games, Atlanta is packed with experiences you don't want to miss while visiting. Tours can be included for an additional fee while registering for the conference.

Atlanta Movie Tour

All About Atlanta

Atlanta Heroes:  
Jimmy Carter &  
Martin Luther King, Jr.

College Football Hall  
of Fame

## Plenary Speaker

Kick off the ASHRAE Winter Conference with the opening Plenary session. ASHRAE award winners are recognized and updates on the Society will be presented.



### Keynote Speaker, Grant Imahara

*Former Host on Discovery's "Mythbusters" & Animatronics Engineering Expert*

For almost a decade, Grant Imahara was one of the hosts of Discovery Channel's Mythbusters. Using a blend of science and fun, he put urban legends to the test, sometimes with explosive results. Grant tested hundreds of myths, and in the process, swam with sharks, hung from the skids of a helicopter, fired cheese out of a cannon into the San Francisco Bay, sliced a car in half using a rocket sled, destroyed so many cars he's stopped counting, and built many, many robots, all in the name of science.

**Learn More and Register at [ashrae.org/atlanta](http://ashrae.org/atlanta)**

## Certification Exams

Saturday, January 12 and Wednesday, January 16



Apply by December 21 to sit for an ASHRAE Certification exam in one of these key fields:

Commissioning (BCxP) // Energy Assessment (BEAP) // Energy Modeling (BEMP) // Healthcare Facility Design (HFDP) // High-Performance Building Design (HPBD) // Building Operations (OPMP)

Conference Registrants can include the Certification application fee when registering. Applications are available at [ashrae.org/certification](http://ashrae.org/certification).

## ASHRAE Learning Institute



### Full-Day Professional Development Seminars

\$415 ASHRAE Member | \$510 Nonmember

#### Saturday, January 12, 8:00 a.m. – 3:00 p.m.

- (60) Commercial Building Energy Audits
- (61) Effective Energy Management in New and Existing Buildings
- (62) Operations and Maintenance of High-Performance Buildings

#### Tuesday, January 15, 9:00 a.m. – 4:00 p.m.

- (75) **NEW!** Choosing the Right Energy Code for Your Project—IECC or ASHRAE 90.1-2016
- (76) Commissioning Process in New and Existing Buildings

### Half-Day Short Courses

\$139 ASHRAE Member | \$184 Nonmember

#### Sunday, January 13, 3:30 p.m. – 6:30 p.m.

- (63) Advanced Designs for Net Zero Buildings
- (64) Air-to-Air Energy Recovery Applications: Best Practices
- (65) Latest in High-Performance Dedicated Outdoor Air Systems (DOAS)
- (66) Variable Refrigerant Flow Systems: Design and Applications

#### Monday, January 14, 2:45 p.m. – 5:45 p.m.

- (71) ASHRAE Guideline 0: The Commissioning Process
- (72) Design of Affordable and Efficient Ground-Source Heat Pumps Systems
- (73) Designing and Operating High-Performing Healthcare HVAC Systems
- (74) Humidity Control II: Real-World Problems and Solutions

#### Monday, January 14, 8:30 a.m. – 11:30 a.m.

- (67) Humidity Control I: Design Tips and Traps
- (6) **NEW!** Solar PV and Thermal System Analysis and Design
- (69) **NEW!** Thermal Energy Storage Systems for Air Conditioning
- (70) Understanding and Designing Chilled-Beam Systems

#### Tuesday, January 15, 9:00 a.m. – 12:00 p.m.

- (77) Avoiding IAQ Problems
- (78) **NEW!** How Smart, Efficient, Sustainable Systems Lead to Improved Resilience

#### Tuesday, January 15, 1:00 p.m. – 4:00 p.m.

- (79) High-Performance Building Design: Applications and Future Trends



**2019 ASHRAE WINTER CONFERENCE**  
JANUARY 12–16 // **AHR EXPO** JANUARY 14–16

The **2019 Winter Conference Technical Program** is now available online. The ASHRAE 365 event website allows you to easily search through technical program sessions, and create your own schedule.